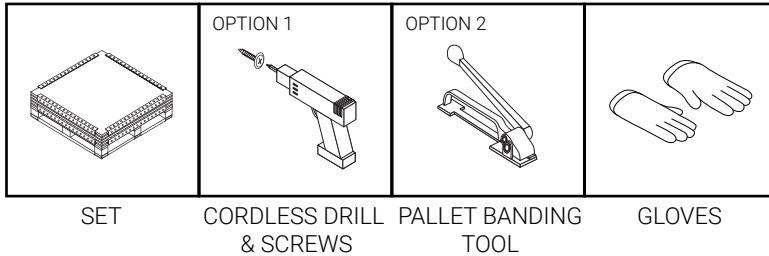


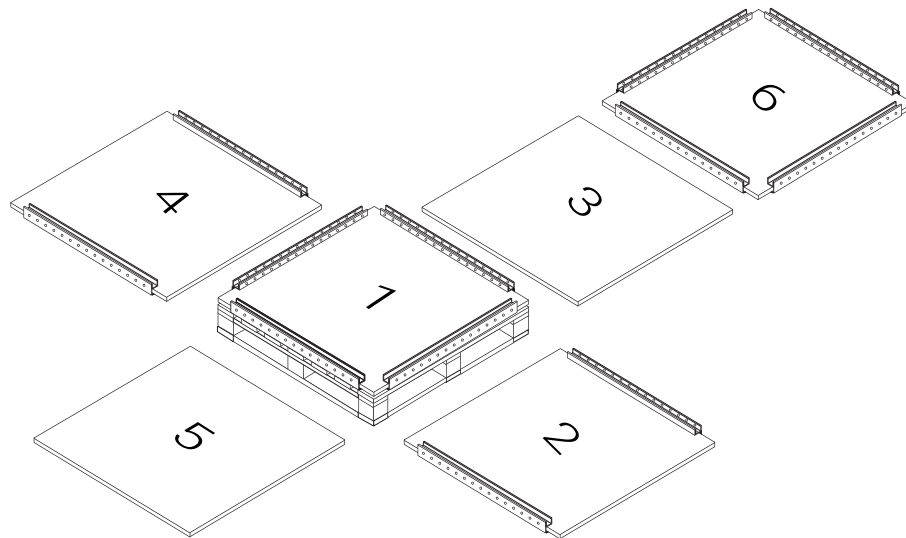
SHARKCRATES ASSEMBLY INSTRUCTIONS



Assembly time: Approximately 5-7 minutes



1



Use the following reference as your guide:

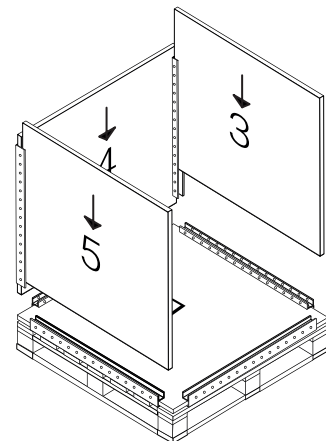
- Panel 1 – Bottom (with 4 brackets)
- Panels 2 & 4 – Ends (with 2 brackets each)
- Panels 3 & 5 – Sides (no brackets)
- Panel 6 – Top (with 4 brackets)



Please note!
There are no numbers on the actual panels

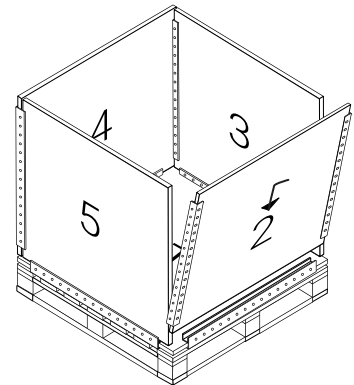
2

One at a time, place panels 4, 5, and 3 into the brackets on panel 1 and the adjoining corner brackets, ensuring that the panels are square and fully inserted into the brackets.



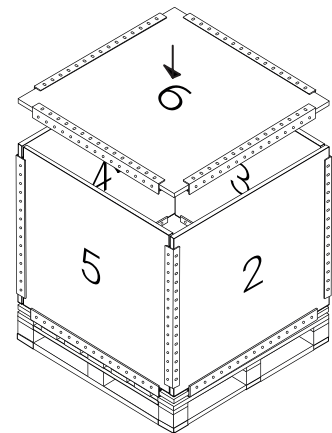
3

Push panel 2 onto the sides of panel 3 and 5 and slide it carefully down into the bracket on panel 1.



4

Place panel 6 on top of panels 2, 3, 4, and 5. Tip: If you are having trouble installing the top, make sure that all other boards are securely seated in their respective brackets and that your crate is on a level surface.



5

Fully-assembled SharkCrate can be secured to the pallet with metal / poly banding or with the included screws. If using screws, it is recommended that they be placed in the bracket holes approximately every 10" or 250mm.

